

# MAKE UP CHECKLIST: WHAT YOU NEED



## FOUNDATION OR BB CREAM

Choose a foundation or BB Cream that matches your skin tone, A good way to check is by testing a small amount on the back of your hand. This goes all over your face and blends into your neck.



## CONTOUR

Most contours come as a powder. Choose one with colours a couple of shades darker than your skin. This is used to emphasise your cheekbones face shape. If you don't have a separate eyeshadow, this palette can double as that too!



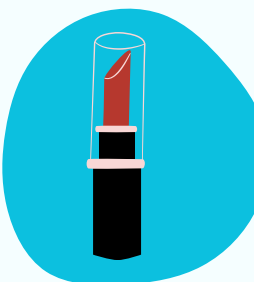
## MASCARA

Onstage, mascara is necessary for ensuring that your eyes stand out, and therefore, your expressions and acting do too! Choose a black mascara, which goes onto your eyelashes.



## BLUSH

Most blush palettes come as a powder. Choose a blush that is a pink or light red tone (similar to how your cheeks would look when you actually blush). Use a brush to pat this onto the tops of your cheeks, your nose and a dot on your chin.



## LIPSTICK

Like mascara, lipstick is important when highlighting your features under stage lights. You can use a lipstick, balm or gloss that's a few shades darker than your lips.



## BRUSHES, SPONGES AND MORE.

There are lots of tools for applying make up - you can choose whatever works for you, and foundation can often be applied with your hands. Blush and contour suit a bigger brush best, whereas eyeshadow is easiest to apply with a smaller one.



## OPTIONAL: EYESHADOW PALETTE

An eyeshadow palette is great for giving your eyes more definition. Choose a palette with a mix of colours, and use darker colours in the crease of your eyelid.